




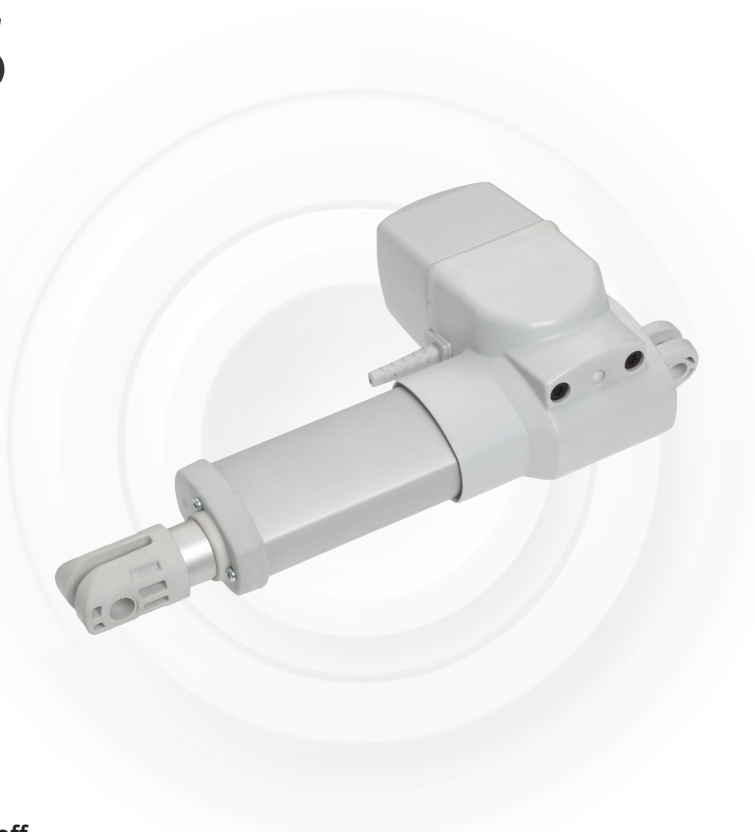


MEGAMAT XS

单驱动

-  24-29V
-  **100W**
Rated Power
-  **IPX6**
Protection
-  +5~40°C
-  Cycles:
≥ 10000



标准配置:

工作模式	Max 1min on / 8min off
推荐安装尺寸	150+行程 (20-400mm)
最大负荷	3000N
认证证书	IEC60601-1
空载噪音	≤60dB(A)@500mm (环境噪音≤35dB (A))
安装方式	0° , 45° or 90°
反馈方式	霍尔反馈

产品图纸:

