

OKIMAT IPSe

for adjustable comfort beds with variable upgrades



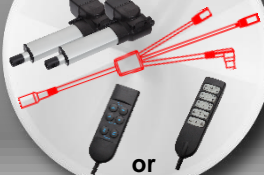
Standard:
Wired handsets



or

or

Upgrade:
+2 actuators



or

Upgrade:
+1 actuator



or

Upgrade:
PowerPack 1300



Upgrade:
Memory control



Upgrade:
RF-System



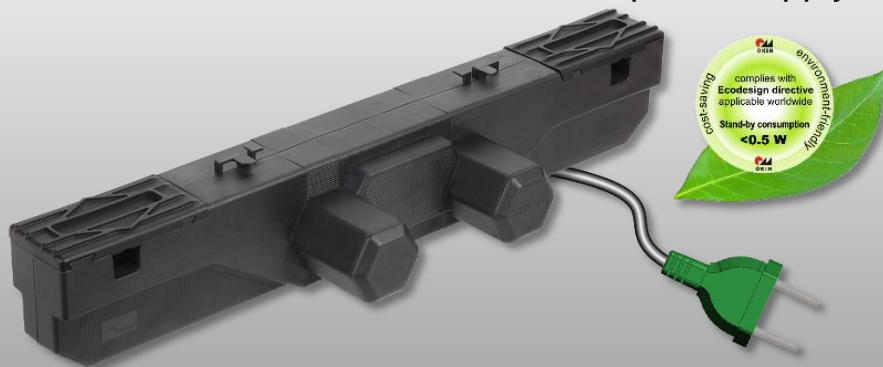
Upgrade:
HE 200



Bidirectional RF communication

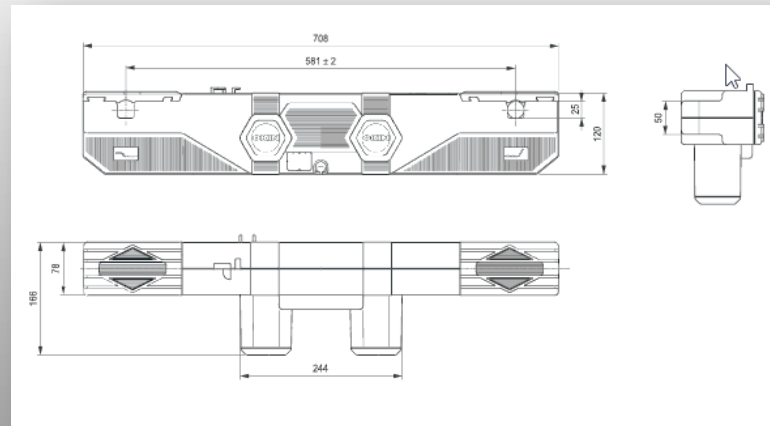
OKIMAT IPSe

Okimat with internal switch mode power supply



Features

- Low power consumption, less than 0.5 W during stand-by,
- complies to the EcoDesign Directive 2009/125/EG.
- Low electromagnetic fields due to the integrated SMPS.
- Reduced annual energy costs.
- Lower weight
- Appliance class II
- Overload protection: Automatic current monitoring and limitation, microprocessor controlled, self resetting.
- Emergency lowering via 9 V battery



Performance

- Load capacity max. 4500 N
- Increased and constant adjustment speed: max. 5.5 mm/sec.
- Voltage stabilized at 29 V DC
- Power rating 58 W nominal / 116 W peak
- Duty cycle 2/18 min. or 10 %, max. 5 switching cycles per minute
- Direct circuit controlled
- Primary voltage range 230-240 V